



Effect of Physico-chemical Properties on Spore Density and Root Colonization of Mycorrhizal Fungi in Industrial Wastelands in Kota, Rajasthan

Suresh S. Rajpurohit^{a*} and Poonam Jaiswal^{a*#}

^a *Department of Botany, J. D. B. Government Girls College, Kota, Rajasthan, India.*

Authors' contributions

This work was carried out in collaboration between both authors. Both authors read and approved the final manuscript.

Article Information

DOI: 10.9734/IJPSS/2022/v34i2131301

Open Peer Review History:

This journal follows the Advanced Open Peer Review policy. Identity of the Reviewers, Editor(s) and additional Reviewers, peer review comments, different versions of the manuscript, comments of the editors, etc are available here: <https://www.sdiarticle5.com/review-history/89116>

Original Research Article

Received 04 May 2022
Accepted 10 July 2022
Published 11 July 2022

ABSTRACT

This study was conducted in selected industrial waste dump sites in the Kota district of Rajasthan, India to investigate the impact of various edaphic factors on spore density and root colonization of arbuscular mycorrhizal (AM) fungi. The current research shows that AMF root colonization rates were insignificantly negatively correlated with EC, soil temperature, P, K, Fe, Cu, Zn, and Mn but significantly positively correlated with soil pH, soil moisture, and insignificantly positively correlated with N and OC ($P < 0.05$). Spore density of mycorrhiza was insignificant and negatively correlated with soil moisture ($P < 0.05$), EC, soil temperature, P, K, Fe, Cu, Zn, and Mn but significantly positively correlated with soil pH and insignificantly positively correlated with N and OC. Edaphic factors may influence the root colonization and spore density of mycorrhiza differentially. Except for pH and soil moisture, almost all other parameters have a very insignificant influence on mycorrhizal root colonization and spore density in industrial wastelands.

Keywords: Edaphic factors; root colonization; spore density; industrial wastelands.

1. INTRODUCTION

Mycorrhiza are obligate symbiotic soil fungi that colonize the roots of the majority of plants

forming an intricate network in the root cortex, regulating community and ecosystem functioning. An Arbuscular Mycorrhizal Fungi (AMF) is a type of mycorrhiza in which the

^oResearch Scholar;

[#]Associate Professor;

^{*}Corresponding author: E-mail: poonamjaiskota@gmail.com;

symbiont fungus penetrates the cortical cells of the roots of a vascular plant forming arbuscules. About 80% of land plants develop mutual associations with arbuscular mycorrhiza [1,2]. Many host plants are dependent on AMF [3] for their nutrition as they help the plant to acquire mineral nutrients from the soil [4] especially in nutrient-poor soil. Mycorrhiza plays important role in increasing nutrient uptake, notably phosphorus and zinc [5,6]. They also prevent soil erosion [7] through the formation of soil aggregates, building up a macrocarpous structure of soil that allows the penetration of water and air in the soil. Mycorrhiza help host plants by enhancing their resistance to root pathogens [8] and abiotic stresses, such as drought and metal toxicity [9,10]. They also improve plant growth by substantially increasing the absorption of water and nutrients by roots and increasing the availability as well as translocation of various nutrients [11,12]. AM fungi facilitate the exchange of various macro and micronutrients, like nitrogen, phosphorus, potassium, sulfur, calcium, copper, and zinc, from the soil at the cost of precious photosynthates when they are associated with host plant roots [13-15].

The major contributor to the dynamics of distribution and diversity of AM fungal species, root colonization, and spore population are soil physico-chemical parameters [16,17], especially the availability of mineral elements [18], pH [19] and electrical conductivity [20,21]. Several edaphic factors viz, texture and pH of the soil, organic matter, soil moisture, and levels of macro and micro-nutrients have been shown to affect root colonization, spore germination, and efficacy of AM fungi [22]. Climatic, as well as edaphic factors can substantially influence AM fungi and their populations, changes in soil nutrients may affect AM association with root and spore

number [23]. Owing to its role in stress endurance, stress tolerance, and pathogen resistance mycorrhiza are considered to play important role in the conservation of biodiversity. Hence knowledge of the various factors that influences the population biology of AM fungi is essential in any attempt to use them in environmental conservation [24].

Kota (24° 33' and 25° 50' N latitude and 75°37' and 76° 31'E longitude) is located along the banks of the Chambal River in the south-eastern part of Rajasthan, India. The district covers an area of 527sqkm and is known as an industrial city in Rajasthan, with Kota Thermal power plant, DCM industries, and stone mining industry as major industries. Kota has fertile land with black soil and is the trade centre for coriander and building limestone "Kota Stone". DCM Shriram Industries is a chemical industry that manufactures Caustic soda, Sodium Hypochlorite, Chlorine, Hydrogen, and Hydrochloric Acid. Kota Thermal Power Plant is a coal-based electricity generation plant situated on the banks of river Chambal whereas Limestone mines are present in the Ramganjmandi area of Kota. Non-industrial areas in the district are taken control.

Previous studies have shown that mycorrhizal association and spore formation potential of AMF was significantly lowered in soil disturbed due to industrial waste dumping [25]. Industrial wastelands have many times enriched nutrient status or nutrient stressed conditions that are different from native undisturbed soil. The objective of this study is to examine the impact of various physico-chemical parameters of soil on mycorrhizal root colonization, and spore density in 3 different industrial wastelands in the Kota district of Rajasthan, India.

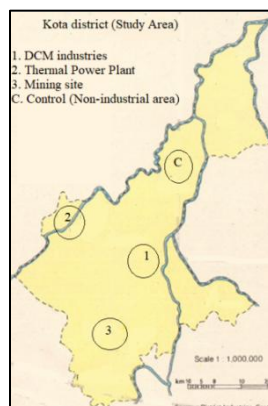


Fig. 1. Map of the study area (Kota) showing control site and 3 experimental sites

2. METHODOLOGY

Waste dumping sites nearby stone mines, Kota thermal power station and DCM Industries are selected for the sampling required for the study and non-industrial area with natural vegetation is taken as control site. Each site was at equidistance within the periphery of 5-6 km. In each site 3 sample plots (five replicates from each sample plot) were selected randomly from where soil and plant specimen were collected by random sampling method. For physico-chemical characterization of soil, approximately 1,000 g of soil samples were collected from rhizospheres of randomly selected plants in each sample plot of selected site. Soils were collected from 15 to 30 cm depth, and were filled in sterile polythene bags and were brought to the laboratory and stored at 5°C–10°C. Each replicate of the soil sample was analyzed for physico-chemical characteristics, like pH, EC, soil moisture, soil temperature, macro-nutrients (N, P, K), and micronutrients (Fe, Zn, Cu, Mn). The pH of the soil was measured using a pH meter. The Electrical conductivity was determined using a conductivity meter in 1:5 (W/V) soil water suspensions at 25°C. Organic Carbon (OC) was estimated using the chromic acid titration method [26]. The Kjeldahl method was used to estimate the available N content using alkaline permanganate [27]. Available P in the soil was determined by Olsen's method by extraction with sodium bicarbonate using a spectrophotometer [28]. Total exchangeable K was determined by the ammonium acetate method [29] using a flame photometer. Fe, Mn, Zn, and Cu were estimated by acid digestion of the soil method [30].

The soil samples were also used for the isolation, quantification, and identification of AM fungal spores. The fine roots of plants having mycorrhizal association were collected, rinsed with tap water, and used to investigate the percentage of root colonization. To prepare roots for the assessment of percentage root colonization Philips and Hayman's root staining and clearing method was used [31]. The percentage root colonization was determined by slide count and gridline intersect method [32] using the following formula:

$$\text{Root colonization (\%)} = \left(\frac{\text{Number of AM positive segments}}{\text{Total number of segments observed}} \right) \times 100$$

The AM fungal spore density was analyzed from 100 g of rhizosphere soil by using wet sieving

and decanting method [33]. About 100 g of soil was taken from each replicate, mixed thoroughly in 1,000 ml of water, and after some time the supernatant was poured through the stacked sieves. Different sized sieves were used in a stack of 250, 210, 150, and 75 μm from top to bottom. The spores were recovered on Whatman filter paper No. 1 and quantification was carried out using Leica EZ4 stereo-microscope. The total spore count was carried out using Leica EZ4 stereomicroscope.

Statistical Analysis was done for Pearson's correlation coefficients of the different physico-chemical parameters of soil versus AM fungal spore density and root colonization associated with host plants was calculated. Significance of the correlation coefficient value is validated with student's *t* test.

3. OBSERVATION AND RESULTS

3.1 Physico-chemical Properties of Soil

Characterization of the soil samples collected from 4 different sites show variation in almost all parameters. The alkalinity of the soil shows an increasing trend in wastelands of DCM industries, thermal power plant sites, and mining waste dump sites whereas control site have slightly alkaline soil pH (7.19 \pm 0.21). DCM industrial area has maximum electrical conductivity whereas it is least in the control site. Average moisture content is found to be highest in control area whereas it is least in waste dump sites in the mining area. Likewise, the mean soil temperature is highest in mining waste dump sites and lowest in control areas. Lack of vegetation cover may be the reason for low moisture content and high soil temperature in mining waste dump sites as well as in thermal waste dump sites (Table 1).

The organic carbon content of the DCM industrial wasteland shows increased values, whereas the mining waste dump site shows decreased organic carbon. The thermal power plant waste dump site has organic carbon values almost similar to the undisturbed (control) site. Lack of vegetation may be the reason for low organic carbon content in mining waste dump sites. Available Nitrogen was highest in DCM waste dump sites and lowest in mining waste lands. Potassium increase in all the three experimental sites as compared to the control site whereas Phosphorus decreases from the control area to DCM industries to thermal to mining waste

Table 1. Physical and chemical properties of control and three experimental sites (industrial waste dump sites)

S. N.	Parameter	Control	DCM	Thermal	Mining
1	pH	7.19 ±0.21	7.51 ±0.33	7.66 ±0.16	7.86 ±0.24
2	EC (ds/m)	0.22 ±0.02	0.28 ±0.24	0.26 ±0.20	0.24 ±0.21
3	Average Soil temp. (°C)	29.9 ±0.76	31.43 ±0.32	32.87 ±0.24	34.1 ±0.41
4	Moisture Content (%)	14.60 ±0.91	10.92 ±0.46	9.92 ±0.85	8.02 ±0.46
5	N (Kg/hect.)	363.2 ±4.05	395.7 ±3.96	318.16 ±4.21	291.43 ±3.62
6	P (Kg/hect.)	32.43 ±1.07	27.13 ±0.29	23.16 ±1.01	20.03 ±0.86
7	K (Kg/hect.)	168.66 ±2.33	183.75 ±3.42	206.6 ±5.03	223.7 ±4.25
8	OC (%)	0.48 ±0.02	0.44±0.24	0.44±0.31	0.35±0.26
9	Fe (ppm)	2.59 ±0.56	3.8±0.28	5.2±0.41	6.3±0.59
10	Mn (ppm)	2.3 ±0.39	2.45±0.08	2.66±0.51	2.82±0.09
11	Cu (ppm)	0.97 ±0.62	1.31 ±0.53	0.85 ±0.08	0.76±0.24
12	Zn (ppm)	0.72 ±0.05	0.85 ±0.09	0.69 ±0.11	1.68 ±0.14
13	Mean Root colonization (%)	53.51 ±1.33	23.10 ±1.02	12.15±1.08	12.45±2.46
14	Mean spore density (spores/10 gm of soil)	26.5 ±1.15	19.17±0.09	9.75±0.31	7.83 ±0.33

dump sites. This proves that among macro-nutrients, Potassium increase with increasing disturbances whereas available nitrogen and Phosphorus decreases. Amongst micro-nutrients, Iron and Manganese increase in all three experimental sites whereas Cu shows the highest value in DCM industrial waste dump site and Zinc shows the highest value in mining waste dump sites (Table 1).

3.2 Correlation between Soil Physico-chemical Properties and Spore Density and Root Colonization

When parameters related to mycorrhiza are analyzed, mean root colonization (%) and spore

density (Spore/ 10 gm of soil) show a decrease from the control site in all three experimental sites. Thermal power plan waste dump site show least root colonization whereas least spore density was recorded in mining waste dump sites.

A correlation study was carried out to study the effect of physico-chemical characteristics of the soil on spore density and mean root colonization. Pearson's Correlation coefficient was estimated between rootzone soil parameters, such as pH, EC, soil moisture, soil temperature, OC, available N, P, K, Cu, Zn, Mn, and Fe, and % root colonization and spore density of mycorrhiza (Table 2).

Table 2. Pearson's correlation coefficient between physico-chemical properties of soil with percentage root colonization and spore density of mycorrhiza

Variable	Spore Density	Root colonization
Root colonization	0.540 ^S	
pH	0.738 ^S	0.575 ^S
EC	-0.087 ^{NS}	-0.093 ^{NS}
Soil moisture	-0.506 ^{NS}	0.589 ^S
Soil temperature	-0.063 ^{NS}	-0.043 ^{NS}
OC	0.071 ^{NS}	0.216 ^{NS}
N	0.114 ^{NS}	0.112 ^{NS}
P	-0.227 ^{NS}	-0.193 ^{NS}
K	-0.106 ^{NS}	-0.077 ^{NS}
Fe	-0.557 ^{NS}	-0.615 ^{NS}
Zn	-0.068 ^{NS}	-0.050 ^{NS}
Cu	-0.025 ^{NS}	-0.018 ^{NS}
Mn	-0.040 ^{NS}	-0.027 ^{NS}

^S Correlation is significant at ($P < 0.05$) level, ^{NS} Correlation is non-significant at ($P < 0.05$) level

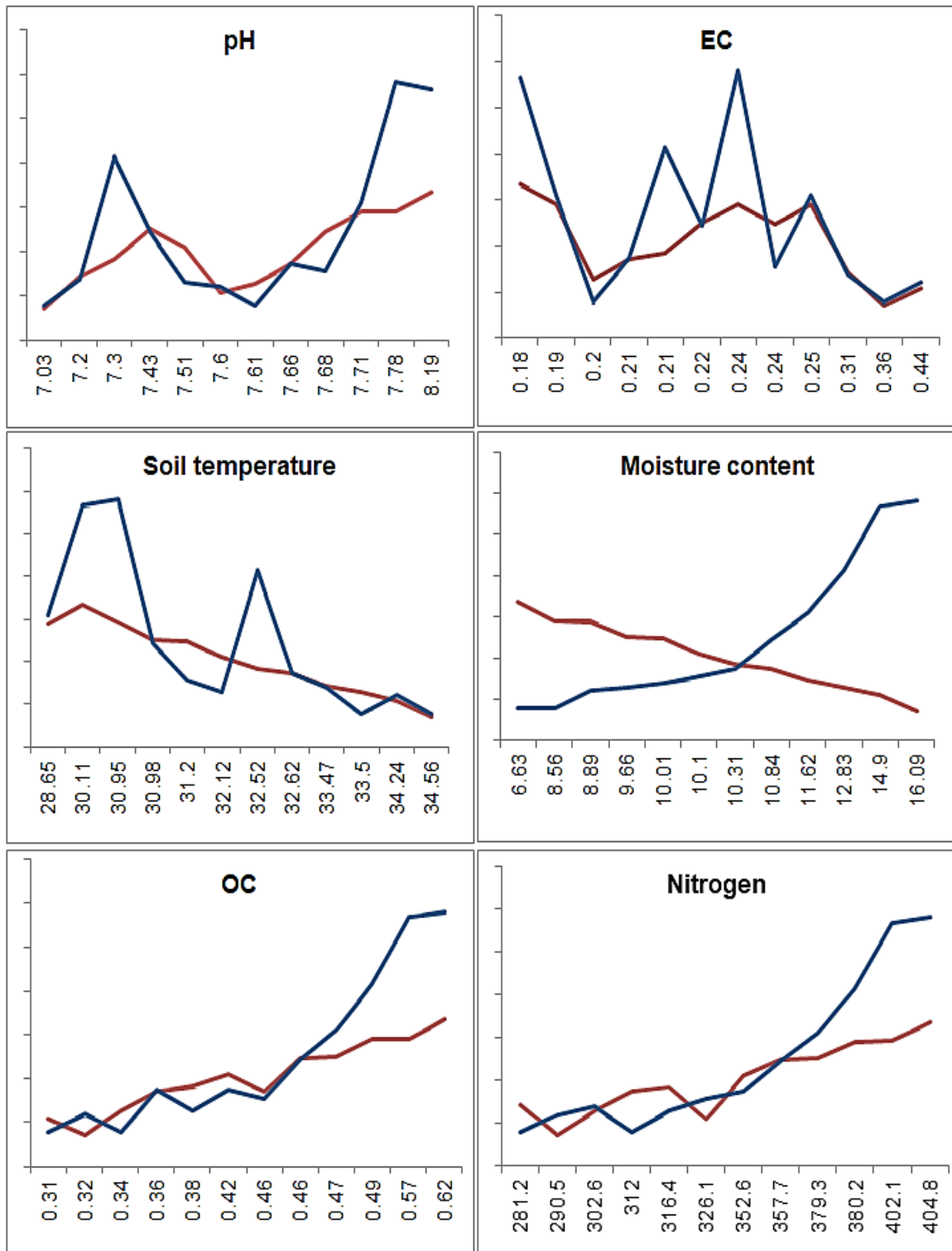


Fig. 2. Correlation between physico-chemical parameters of soil (pH, EC, Soil temperature, Moisture content, OC and Available nitrogen) and percentage mycorrhizal association and spore density (spore density is shown by the red line and root colonization by blue line. Physico-chemical parameters are taken on X-axis and spore density and % root colonization on Y-axis)



Fig. 3. Correlation between physico-chemical parameters of soil (Available P, K, Cu, Fe, Mn, Zn) and percentage mycorrhizal association and spore density (spore density is shown by the red line and root colonization by blue line. Physico-chemical parameters are taken on X-axis and spore density and % root colonization on Y-axis).

The results show that mean spore density and mean root colonization both have a significant positive correlation with soil pH. Spore density and root colonization of mycorrhiza are negatively correlated to soil Electrical conductivity (EC) which is not significant. Soil moisture is negatively correlated (non-significant) with spore density but positively correlated with

percentage root colonization (significant). Soil temperature is negatively correlated (not significant) with both the spore density and root colonization. All the macronutrients (P, K) except N and micronutrients (Fe, Zn, Cu, and Mn) exhibited no significant negative correlation with spore density and root colonization.

Table 2 and 3 show that the correlation between physico-chemical parameters of the soil; pH, EC, and soil temperature show correlation with spore density and root colonization but they do not show a clear-cut trend of their correlation (Fig. 2 and 3). The same is the trend in the case of macro and micro-nutrients in soil.

4. DISCUSSION

The change in soil properties and physiological function of plants will directly affect colonization, growth, N metabolism, and P uptake of AMF [34]. VAM fungi associated with plants occur across a broad range of pH, both acid and alkaline, with more species occurring in the alkaline range. Results of the present study show that all the soil samples including the control show slightly alkaline pH. Mycorrhizal association and spore number were positively influenced by soil pH but their response to soil pH may doesn't show the same trend. Though effect of soil pH on root colonization was statistically significant but in graphical presentation it not found to be consistent (Fig. 2). Mycorrhizal colonization and community structure can vary with soil pH [35-37]. Acidic soils have been reported to reduce the diversity of AM fungi [35,38]. Variations in soil pH alter the concentration of many nutrients and toxic ions and hydrogen ions in a soil solution hence may affect the development and functioning of arbuscular mycorrhiza [39]. The variation may also be attributed to the host's mediated changes in pH of rhizosphere. The response of AM fungi to soil pH may depend on the species and strains constituting the indigenous AM flora [40]. Soil Electrical Conductivity (EC) is a measure of the amount of salts in the soil. A higher conductivity value indicates that there are more chemicals dissolved in the water. Most of the industrial effluents carry dissolved and solids salts that may increase the EC of the soil. Though EC of the soil is insignificantly and negatively correlated with both the root colonization and spore density it doesn't show a consistent correlation with root colonization (Fig. 2).

Various soil properties that depend on fluctuation in environmental factors and climatic variables viz. soil temperature and moisture also affect mycorrhiza communities. The effects of temperature on root colonization are complex and the responses of mycorrhiza vary with both host plant and fungus [41]. VAM colonization is repressed at low temperatures (15°C) [42]. The maximum temperature for mycorrhizal

association ranged between 26.2 and 29.3°C [43]. Higher temperature favours root colonization because root elongation rate is enhanced under increased temperature leading to a better AMF root colonization [44]. Whereas at a low temperature, reduced nutrient acquisition by AMF leads to a decrease in mycorrhizal colonization [45]. Growth and colonization of mycorrhiza occur at an optimum medium temperature. In the present study 30°C is found to be the optimum temperature for the mycorrhizal association but the correlation between soil temperature and root colonization is not significant. When the temperature exceeded an optimum it had a negative effect on root colonization [46]. The responses of AMF to an increase or a decrease in temperature seem to vary according to the host plant species [47].

Soil moisture content and seasonal fluctuations also influence AM fungal communities [48,49]. Mycorrhizal colonization was directly correlated with precipitation [50], on a contrary, Augé et al., [51] reported that AMF colonization increased under water-limiting conditions. Results of the present study go with Allen, [52] and Khanam et al., [53] who reported that soil moisture and AM fungal colonization were positively correlated but contradict Dickman et al., [54] who reported that spore population was positively correlated with soil moisture. Generally, AM fungi are sensitive to soil moisture and optimum moisture for plant growth is suitable for AM colonization and sporulation [55].

In the present study, organic carbon showed a non-significant positive correlation with both mycorrhizal spore density and root colonization, thereby corroborating previous reports [53,56]. These results are also in line with the findings of Liu et al. [57] and Sivakumar [58] who also found a high correlation between OC and spore production. Organic matter also affects the mycorrhizal community in soil [59,60]. There are a few contradictory reports that OC and spore density were negatively related [61]. Colonization rates affect the capacity of AMF to confer its associated host plant with soil nutrients in return for Carbon that is required for the growth of mycorrhiza, which directly affects spore germination and the growth of fungal hyphae [62]. Organic matter enhances the water holding capacity of soil which may increase the sporulation of AM fungi thus showing a positive correlation with organic carbon content in the soil [63,64]. AMF is thought to positively influence

soil Carbon pool [65], and in the long-term may increase carbon storage [66].

The amount of available N positively influences the AM fungi spore population and colonization [67,68] and positively correlated with root colonization and spore number [53]. The results of the present study also corroborate with these findings. Aziz and Hebte [69] reported the stimulation of root colonization by soil N. There are reports that N can either stimulate or suppress root colonization and spore production through modifications of soil pH [70]. Nitrogen plays an important role in influencing the formation of mycorrhizal association and functions mainly through changes in soil pH. However, the effect of Nitrogen and spore abundance is related to other soil factors and to the host with which they are associated.

AM fungi are often important in root colonization, especially in soil with limited phosphorus [24]. Soil P was negatively correlated with the abundance of root colonization [53,71-73] but there are reports that a high soil P supply does not always have a negative impact on AM fungi colonization [74] and spore density also [75]. On the contrary Khanam et al., [53]; Bhardwaj et al., [76] reported that soil P was positively correlated with spore density. Variation in response to root colonization and spore number to the soil P could be attributed to several factors. It is also reported that higher soil P can reduce AM formation and the inhibition may be due to a direct effect on the external hyphal growth or be indirectly associated with host P status [77]. Other factors which attribute to the variation in response of root colonization and spore density are sensitivity of mycorrhiza species and strain to phosphorus [78]. The varied host root growth response to changes in P levels [79], or change in the cell membrane permeability to varying cellular P concentrations is responsible for the degree of AM colonization and sporulation [80].

Soil Potassium was found to be insignificantly negatively correlated with root colonization as well as with spore density. The findings were in harmony with those of Khade and Rodrigues [75] but contradicted Gaur and Kaushik [81], and Abubacker et al. [82] who observed a positive relationship between Available Potassium and spore density, and Khanam et al. [53] who reported a positive correlation with root colonization. A negative correlation between Available Potassium and root colonization was also reported by Ardestani et al. [83]. An inverse

relationship between AMF root colonization and Available Potassium could be due to the fact that AMF tends to lose its potential to develop its structural components such as arbuscules as the levels of Potassium concentration in soil increase [84]. Soil micronutrients (Fe, Cu, Zn, and Mn) are insignificantly negatively correlated with root colonization and spore density.

Environmental factors that influence mycorrhizal root colonization are chemical soil characteristics and climatic factors, whereas physical soil properties had no significant influence on AMF root colonization [43]. Studies indicate that soil pH had a greater influence on AM fungal communities than host plant species [85]. Lin et al., [86] reported that except, for soil moisture, there was no significant correlation with the other soil physico-chemical factors with root colonization and spore density. But relative content of N and P in the soil affects AMF colonization and spore density. Some studies indicate that the host plant favours mycorrhizal association. On industrial wastelands plants of family Fabaceae have higher root colonization [87].

5. CONCLUSION

In the present research, it can be concluded that most of the edaphic factors had a varied influence on AM fungal colonization and spore number. The mycorrhizal root colonization and spore density respond differentially to physical, chemical, and climatic factors of the soil. Various soil factors have a combined influence on the mycorrhiza whose response may be specific to mycorrhiza species. The research also shows that in response to physico-chemical properties, root colonization shows no perfect correlation whereas spore density follows a more or less perfect correlation (Fig. 2 and 3). There are possibilities that the availability of host plants has a greater role to play in mycorrhizal colonization and spore density than soil physico-chemical properties of soil.

COMPETING INTERESTS

Authors have declared that no competing interests exist.

REFERENCES

1. Zhu XC, Song FB, Liu SQ, Liu TD, Zhou X. Arbuscular mycorrhizae improve photosynthesis and water status of

- Zea mays* L. under drought stress. *Plant Soil Environ.* 2012;58(4):186-91.
DOI: 10.17221/23/2011-PSE.
2. Lehnert M, Kessler M. Mycorrhizal relationships in lycophytes and ferns. *Fern gazette.* 2018;20(3):101-16.
 3. Gemma JN, Koske RE, Habte M. Mycorrhizal dependency of some endemic and endangered Hawaiian plant species. *Am J Bot.* 2002;89(2):337-45.
DOI: 10.3732/ajb.89.2.337, PMID 21669742.
 4. Harley JL, Smith SE. Mycorrhizal symbiosis. London: Academic Press; 1983;483.
 5. Bolan NS. A critical review of the role of mycorrhizal fungi in the uptake of phosphorus by plants. *Plant Soil.* 1991;134(2):189-207.
DOI: 10.1007/BF00012037.
 6. Burkert B, Robson A. 65Zn uptake in subterranean clover (*Trifolium subterraneum* L.) by three vesicular-arbuscular mycorrhizal fungi in a root-free sandy soil. *Soil Biol Biochem.* 1994;26(9):1117-24.
DOI: 10.1016/0038-0717(94)90133-3.
 7. Miller RM, Justrow JD. The application of VA mycorrhizae to ecosystem restoration and reclamation. In: Allen MF, editor *Mycorrhizal functioning.* London: Chapman and Hill; 1992. p. 438-67.
 8. Borowicz VA. Do arbuscular mycorrhizal fungi alter plantpathogen reactions? *Ecology.* 2001;82(11):3057-68.
DOI: 10.1890/0012-9658(2001)082[3057:DAMFAP]2.0.CO;2.
 9. Meharg AA, Cairney JWG. Co-evolution of mycorrhizal symbionts and their hosts to metal-contaminated environments. *Adv Ecol Res.* 1999;30:69-112.
DOI: 10.1016/S0065-2504(08)60017-3.
 10. Smith SE, V Gianinazzi-Pearson. Physiological interaction between symbionts in vesicular - arbuscular mycorrhizal plants. *Annual Review of Plant Physiology and Plant Molecular Biology.* 1988;39:221-224.
 11. Roupael Y, Franken P, Schneider C, Schwarz D, Giovannetti M, Agnolucci M. Arbuscular mycorrhizal fungi act as bio-stimulants in horticultural crops. *Sci Hortic.* 2015;196:91-108.
DOI: 10.1016/j. scienta.2015.09.002.
 12. Bowles TM, Barrios-Masias FH, Carlisle EA, Cavagnaro TR, Jackson LE. Effects of arbuscular mycorrhizae on tomato yield, nutrient uptake, water relations, and soil carbon dynamics under deficit irrigation in field conditions. *Sci Total Environ.* 2016;566-567:1223-34.
DOI: 10.1016/j. scitotenv.2016.05.178.
 13. Porras-Soriano A, Soriano-Martín ML, Porras-Piedra A, Azcón R. Arbuscular mycorrhizal fungi increased growth, nutrient uptake and tolerance to salinity in olive trees under nursery conditions. *J Plant Physiol.* 2009;166(13):1350-9.
DOI: 10.1016/j.jplph.2009.02.010, PMID 19342122.
 14. Bati CB, Santilli E, Lombardo L. Effect of arbuscular mycorrhizal fungi on growth and on micronutrient and macronutrient uptake and allocation in olive plantlets growing under high total Mn levels. *Mycorrhiza.* 2015;25(2):97-108.
DOI: 10.1007/s00572-014-0589-0, PMID 25008210.
 15. Wang W, Shi J, Xie Q, Jiang Y, Yu N, Wang E. Nutrient exchange and regulation in arbuscular mycorrhizal symbiosis. *Mol Plant.* 2017;10(9):1147-58.
DOI: 10.1016/j.molp.2017.07.012, PMID 28782719.
 16. Song J, Han Y, Bai B, Jin S, He Q, Ren J. Diversity of arbuscular mycorrhizal fungi in rhizosphere soils of the Chinese medicinal herb *Sophora flavescens* Ait. *Soil Till Res.* 2019;195:104423.
DOI: 10.1016/j.still.2019.104423.
 17. Šmilauer P, Košnar J, Kotlínek M, Šmilauerová M. Contrasting effects of host identity, plant community, and local species pool on the composition and colonization levels of arbuscular mycorrhizal fungal community in a temperate grassland. *New Phytol.* 2020;225(1):461-73.
DOI: 10.1111/nph.16112, PMID 31408907.
 18. Johnson NC, Wilson GWT, Bowker MA, Wilson JA, Miller RM. Resource limitation is a driver of local adaptation in mycorrhizal symbioses. *Proc Natl Acad Sci U S A.* 2010;107(5):2093-8.
DOI: 10.1073/pnas.0906710107, PMID 20133855.
 19. Dumbrell AJ, Ashton PD, Aziz N, Feng G, Nelson M, Dytham C, Fitter AH, Helgason T. Distinct seasonal assemblages of arbuscular mycorrhizal fungi revealed by massively parallel Pyrosequencing. *New Phytol.* 2011;190(3):794-804.

- DOI: 10.1111/j.1469-8137.2010.03636.x, PMID 21294738.
20. Giri B, Kapoor R, Mukerji KG. Improved tolerance of *Acacia nilotica* to salt stress by arbuscular mycorrhiza *Glomus fasciculatum* may be partly related to elevated K/Na ratios in root and shoot tissues. *Microb Ecol.* 2007;54(4):753-60.
DOI: 10.1007/s00248-007-9239-9, PMID 17372663.
 21. Sheng M, Tang M, Chen H, Yang B, Zhang F, Huang Y. Influence of arbuscular mycorrhizae on photosynthesis and water status of maize plants under salt stress. *Mycorrhiza.* 2008;18(6-7):287-96.
DOI: 10.1007/s00572-008-0180-7, PMID 18584217.
 22. Khalil S, Loynachan TE, McNabb HS. Colonization of soybean by mycorrhizal fungi and spore population in Iowa soil. *Agron J.* 1992;84(5):832-36.
DOI: 10.2134/agronj1992.00021962008400050014x.
 23. Abbott LK, Robson AD. Factors influencing the occurrence of vesicular—arbuscular mycorrhizas. *Agric Ecosyst Environ.* 1991;35(2-3):121-50.
DOI: 10.31033/ijrasb.8.3.28.
 24. Allen MF. *The ecology of Mycorrhizae.* Cambridge: Cambridge University Press; 1991.
 25. Rajpurohit SS, Jaiswal P. Mycorrhizal Association in Industrial Wastelands in Kota, Rajasthan, India, *International Journal for Research in Applied Sciences and Biotechnology.* 2021; 8(3):231-236.
DOI: 10.12691/aees-8-6-12.
 26. Walkley AJ, Black IA. Estimation of soil organic carbon by the chromic acid titration method. *Soil Sci.* 1934;37(1):29-38.
DOI:10.1097/00010694-193401000-00003.
 27. Subbiah BV, Asija GL. A rapid procedure for determination of available nitrogen in soils. *Curr Sci.* 1956;25:259-60.
 28. Olsen SR, Cole CV, Watanabe FS, La D. Estimation of available phosphorus by extraction with sodium bicarbonate (Circular 39). Washington, DC: United States Department of Agriculture; 1954.
 29. Hanway JJ, Heidel H. Soil analysis methods as used in Iowa state college soil testing laboratory. *Iowa State Coll Agric Bull.* 1952;57:1-31.
 30. Jackson ML. *Soil chemical analysis.* New Delhi, India: Prentice Hall of India Pvt. Ltd. 1967;36-82.
 31. Phillips JM, Hayman DS. Improved procedures for clearing roots and staining parasitic and vesicular arbuscular mycorrhizal fungi for rapid assessment of infection. *Trans Br Mycol Soc.* 1970;55(1):158-1N18.
DOI: 10.1016/S0007-1536(70)80110-3.
 32. Giovannetti M, Mosse B. An evaluation of techniques for measuring vesicular-arbuscular infection in roots. *New Phytol.* 1980;84(3):489-500.
DOI: 10.1111/j.1469-8137.1980.tb04556.x.
 33. Gerdemann JW, Nicolson TH. Spores of mycorrhizal endogone species extracted from soil by wet sieving and decanting. *Trans Br Mycol Soc.* 1963;46(2):235-44.
DOI: 10.1016/S0007-1536(63)80079-0.
 34. Lin JX. et al. Research progress on effects of nitrogen deposition on symbiotic of plant-arbuscular mycorrhizal. *Grassl. Turf.* 2015; 35:88–94.
 35. Coughlan AP, Dalpé Y, Lapointe L, Piché Y. Soil pH-induced changes in root colonization, diversity, and reproduction of symbiotic arbuscular mycorrhizal fungi from healthy and declining maple forests. *Can J Forest Res.* 2000;30(10):1543-54.
DOI: 10.1139/x00-090.
 36. Van Aarle IM, Olsson PA, Söderström B. Arbuscular mycorrhizal fungi respond to the substrate pH of their extraradical mycelium by altered growth and root colonization. *New Phytol.* 2002;155(1):173-82.
DOI: 10.1046/j.1469-8137.2002.00439.x, PMID 33873298.
 37. Melo CD, Luna S, Krüger C, Walker C, Mendonça D, Fonseca HMA et al. Arbuscular mycorrhizal fungal community composition associated with *Juniperus brevifolia* in native Azorean forest. *Acta Oecol.* 2017;79:48-61.
DOI: 10.1016/j.actao.2016.12.006.
 38. Wang GM, Stribley DP, Tinker PB, Walker C. Effects of pH on arbuscular mycorrhiza I. Field observations on the long-term liming experiments at Rothamsted and Woburn. *New Phytol.* 1993;124(3):465-72.
DOI: 10.1111/j.1469-8137.1993.tb03837.x.
 39. Hayman DS, Tavares M. Plant growth responses to vasicular arbuscular mycorrhiza. XV. Influence of soil pH on the symbiotic efficiency of different

- endophytes. *New Phytol.* 1985;100:567-77.
40. Robson AD, Abbott LK. The effect of soil acidity on microbial activity in soils. In: Robson AD, editor *Soil acidity and plant growth.* Sydney: Academic Press.1989;139-65.
 41. Smith SE, Read DJ. *Mycorrhizal symbiosis.* 3rd ed. New York: Academic Press (Elsevier). 2008;787.
 42. Zhang F, Hamel C, Kianmehr H, Smith DL. Root-zone temperature and soybean [*Glycine max.* (L.) merr.] vesicular-arbuscular mycorrhizae: development and interactions with the nitrogen fixing symbiosis. *Environ Exp Bot.* 1995;35(3):287-98. DOI: 10.1016/0098-8472(95)00023-2.
 43. Jerbi M., Labidi S., Lounès-Hadj Sahraoui A., Chaar, H., & Ben Jeddi, F. Higher temperatures and lower annual rainfall do not restrict, directly or indirectly, the mycorrhizal colonization of barley (*Hordeum vulgare* L.) under rainfed conditions. *PLoS ONE*, 2020; 15.
 44. Frater P. N., Borer, E., Fay, P. A., Jin, V., Knaeble, B., Seabloom, E., Sullivan, L. L., Wedin, D. A., & Harpole, W. S. Nutrients and environment influence arbuscular mycorrhizal colonization both independently and interactively in *Schizachyrium scoparium*. *Plant and Soil.* 2018; 425(1-2), 493-506. DOI: 10.1007/s11104-018-3597-6
 45. Hetrick BAD, Bloom J. The influence of temperature on colonization of winter wheat by vesicular-arbuscular mycorrhizal fungi. *Mycologia.* 1984;76(5):953-6. DOI: 10.1080/00275514.1984.12023937.
 46. Soudzilovskaia NA, Douma JC, Akhmetzhanova AA, Van Bodegom PM, Cornwell WK, Moens EJ, et al. Global patterns of plant root colonization intensity by mycorrhizal fungi explained by climate and soil chemistry. *Glob Ecol Biogeogr.* 2015;24(3):371-82. DOI: 10.1111/geb.12272.
 47. Heinemeyer A, Fitter AH. Impact of temperature on the arbuscular mycorrhizal (AM) symbiosis: growth responses of the host plant and its AM fungal partner. *J Exp Bot.* 2004;55(396):525-34. DOI: 10.1093/jxb/erh049, PMID 14739273.
 48. Deepika S, Kothamasi D. Soil moisture - a regulator of arbuscular mycorrhizal fungal community assembly and symbiotic phosphorus uptake. *Mycorrhiza.* 2015;25(1):67-75. DOI: 10.1007/s00572-014-0596-1. PMID 25085217.
 49. Shinde BP, Singh N. Effect of arbuscular mycorrhizal fungi on growth parameters of sweet corn under NaCl salinity. *Int J Curr Microbiol Appl Sci.* 2017;6(2):1317-25. DOI: 10.20546/ijcmas.2017.602.149.
 50. Zhang J, Wang F, Che R, Wang P, Liu H, Ji B et al. Precipitation shapes communities of arbuscular mycorrhizal fungi in Tibetan alpine steppe [sci rep]. *Sci Rep.* 2016;6:23488. DOI: 10.1038/srep23488, PMID 27002188.
 51. Augé RM, Toler HD, Saxton AM. Arbuscular mycorrhizal symbiosis alters stomatal conductance of host plants more under drought than under amply watered conditions: a meta-analysis. *Mycorrhiza.* 2015;25(1):13-24. DOI: 10.1007/s00572-014-0585-4, PMID 24831020.
 52. Allen EB. The role of mycorrhiza in mined land diversity. In: *Proceedings of the third biennial symposium surface mine reclamation on the great plains, MT, 19–21 March 1984.* 1984;273-95.
 53. Khanam D, Mridha MAU, Solaiman ARM, Hossain T. Effect of edaphic factors on root colonization and spore population of arbuscular mycorrhizal fungi. *Bull Inst Trop Agric Kyushu Univ.* 2006;29:97-104.
 54. Dickman LA, Liberta AE, Anderson RC. Ecological iteration of little blue stem and vesicular arbuscular mycorrhizal fungi. *Can J Bot.* 1984;62(11):2272-7. DOI: 10.1139/b84-309.
 55. Redhead JF. Endotrophic mycorrhiza in Nigeria Some aspects of the ecology of the endotrophic mycorrhizal association of *Khaya grandiflora* C DC. In: Sanders FE, Mosse B, Tinker PB, editors, *Endomycorrhizas;* Academic Press, Ney York. 1975;447-460.
 56. Boddington CL, Dodd JC. The effect of agricultural practices on the development of indigenous arbuscular mycorrhizal fungi. *Plant Soil.* 2000;218:145-57.
 57. Liu Y, Su MY, Yan XH, Liu WT. The mean-square slope of ocean surface waves and its effects on radar backscatter. *J Atmos Ocean Technol.* 2000;17(8):1092-105. DOI:10.1175/1520-0426(2000)017<1092:TMSOO>2.0.CO;2.

58. Sivakumar N. Effect of edaphic factors and seasonal variation on spore density and root colonization of arbuscular mycorrhizal fungi in sugarcane fields. *Ann Microbiol.* 2013;63(1):151-60.
DOI: 10.1007/s13213-012-0455-2.
59. Torrecillas E, del Mar Alguacil MM, Roldán A, Díaz G, Montesinos-Navarro A, Torres MP. Modularity reveals the tendency of arbuscular mycorrhizal fungi to interact differently with generalist and specialist plant species in gypsum soils. *Appl Environ Microbiol.* 2014;80(17):5457-66.
DOI: 10.1128/AEM.01358-14, PMID 24973074.
60. Wang C, Gu Z, Cui H, Zhu H, Fu S, Yao Q. Differences in arbuscular mycorrhizal fungal community composition in soils of three land use types in subtropical hilly area of Southern China. *PLOS ONE.* 2015;10(6):e0130983.
DOI: 10.1371/journal.pone.0130983, PMID 26107285.
61. Hindumathi A, Reddy BN. Occurrence and distribution of arbuscular mycorrhizal fungi and microbial flora in the rhizosphere soils of mungbean [*Vigna radiata* (L.)] and soybean (*glycine max* (L.) Merr) from Adilabad, Nizamabad and Karimnagar districts of Andhra Pradesh state, India. *Adv Biosci and Biotechnology.* 2011;2:275-86.
62. Cai XZ. Effects of nitrogen addition on arbuscular mycorrhizal fungi and nitrogen uptake of Chinese fir seedlings [PhD thesis]. Fujian Normal University; 2017.
63. Mohammad MJ, Hamad SR, Malkawi HI. Population of arbuscular mycorrhizal fungi in semi-arid environment of Jordan as influenced by biotic and abiotic factors. *J Arid Environ.* 2003;53(3):409-17.
DOI: 10.1006/jare.2002.1046.
64. Mathur N, Bohra JSS, Quaizi A, Vyas A. Arbuscular mycorrhizal fungi: A potential tool for phytoremediation. *J Plant Sci.* 2007;2(2):127-40.
DOI: 10.3923/jps.2007.127.140.
65. Wilson GW, Rice CW, Rillig MC, Springer A, Hartnett DC. Soil aggregation and carbon sequestration are tightly correlated with the abundance of arbuscular mycorrhizal fungi: results from long-term field experiments. *Ecol Lett.* 2009; 12(5):452-61.
DOI: 10.1111/j.1461-0248.2009.01303.x, PMID 19320689.
66. Iversen CM, Keller JK, Garten CT, Norby RJ. Soil carbon and nitrogen cycling and storage throughout the soil profile in a sweetgum plantation after 11 years of CO₂-enrichment. *Glob Change Biol.* 2012;18(5):1684-97.
DOI: 10.1111/j.1365-2486.2012.02643.x.
67. Egerton-Warburton LM, Johnson NC, Allen EB. Mycorrhizal community dynamics following nitrogen fertilization: a cross-site test in five grasslands. *Ecol Monogr.* 2007;77(4):527-44.
DOI: 10.1890/06-1772.1.
68. Silvana VM, Carlos FJ, Lucía AC, Natalia A, Marta C. Colonization dynamics of arbuscular mycorrhizal fungi (AMF) in *Ilex paraguariensis* crops: Seasonality and influence of management practices. *J King Saud Univ Sci.* 2020;32(1):183-8.
DOI: 10.1016/j.jksus.2018.03.017.
69. Aziz T, Habte M. Influence of inorganic N on mycorrhizal activity, nodulation, and growth of *Leucaena leucocephala* in an oxisol subjected to simulated erosion. *Commun Soil Sci Plant Anal.* 1989;20(3-4):239-51.
DOI: 10.1080/00103628909368080.
70. Sylvia DM, Neal LH. Nitrogen affects the phosphate response of VA mycorrhiza. *New Phytol.* 1990;115(2):303-10.
DOI: 10.1111/j.1469-8137.1990.tb00456.x, PMID 33873960.
71. Morita A, Konishi S. Relationship between vesicular arbuscular mycorrhizal infection and soil phosphorus concentration in tea fields. *Soil Sci Plant Nutr.* 1989;35(1):139-43.
DOI: 10.1080/00380768.1989.10434745.
72. Bainard LD, Bainard JD, Hamel C, Gan Y. Spatial and temporal structuring of arbuscular mycorrhizal communities is differentially influenced by abiotic factors and host crop in a semi-arid prairie agroecosystem. *FEMS Microbiol Ecol.* 2014;88(2):333-44.
DOI: 10.1111/1574-6941.12300, PMID 24527842.
73. Nguyen TD, Cavagnaro TR, Watts-Williams SJ. The effects of soil phosphorus and zinc availability on plant responses to mycorrhizal fungi: a physiological and molecular assessment [sci rep]. *Sci Rep.* 2019;9(1):14880.
DOI: 10.1038/s41598-019-51369-5, PMID 31619728.

74. Gosling P, Mead A, Proctor M, Hammond JP, Bending GD. Contrasting arbuscular mycorrhizal communities colonizing different host plants show a similar response to a soil phosphorus concentration gradient. *New Phytol.* 2013;198(2):546-56. DOI: 10.1111/nph.12169, PMID 23421495.
75. Khade SW, Rodrigues BF. Arbuscular mycorrhizal fungi associated with varieties of *Carica papaya* L. in tropical agro-based ecosystem of Goa, India. *Trop Subtrop Agroecosystems.* 2009;10:369-81.
76. Bhardwaj S, Dudeja SS, Khurana AL. Distribution of Vesicular-Arbuscular Mycorrhizal Fungi in the Natural Ecosystem, *Folia Microbiologica.* 1997;42(6):589-594, DOI: 10.1007/BF02815471
77. Sander SFE. Effect of foliar applied phosphate on the mycorrhizal infection of onion roots. In: *Endomycorrhizas.* S F E Sander; B. Mosse; PB Tinker. (eds.) Academic Press. London. 1975;261-276.
78. Trouvelot A, Gianinazzi S, Gianinazzi-Pearson V. Screening of VAM fungi for phosphate tolerance under simulated field conditions. In: Sylvia DM, Hung LL, Graham JH, editors. *Mycorrhizae in the new decade.* Proceedings of the 7th north Am conf. on mycorrhiza. Gainesville, FL: University Florida, IFAS. 1987;39.
79. Smith S E. Inflow of Phosphate into mycorrhizal and non-mycorrhizal plants of *Trifolium subterraneum* at different levels of soil phosphate. *New Phytol.* 1982; 90:293-303
80. Daniels Hetrick BA. Ecology of VA mycorrhizal fungi. In: Powell CL, Bagyaraj DJ, editors *VA mycorrhiza.* Boca Raton, FL: CRC Press. 1984;35-55.
81. Gaur S, Kaushik P. Analysis of vesicular arbuscular mycorrhiza associated with medicinal plants in Uttarakhand state of India. *World Appl Sci J.* 2011;14:645-53.
82. Abubacker M, Visvanathan M, Srinivasan S. Impact of pesticides on AMF spore population and diversity in banana (*Musa spp.*). *Soils.* 2014;2:1279-86.
83. Ardestani NK, Zare-Maivan H, Ghanati F. Effect of different concentrations of potassium and magnesium on mycorrhizal colonization of maize in pot culture. *Afr J Biotechnol.* 2011;10:16548-50.
84. Vogel-Mikuš K, Drobne D, Regvar M. Zn, Cd and Pb accumulation and arbuscular mycorrhizal colonisation of pennycress *Thlaspi praecox* Wulf. (Brassicaceae) from the vicinity of a lead mine and smelter in Slovenia. *Environ Pollut.* 2005;133(2):233-42. DOI: 10.1016/j.envpol.2004.06.021, PMID 15519454.
85. Dumbrell AJ, Nelson M, Helgason T, Dytham C, Fitter AH. Relative roles of niche and neutral processes in structuring a soil microbial community. *ISME J.* 2010;4(3):337-45. DOI: 10.1038/ismej.2009.122, PMID 19924158.
86. Lin C., Wang Y., Liu M. Li Q., Xiao W., & Song X. Effects of nitrogen deposition and phosphorus addition on arbuscular mycorrhizal fungi of Chinese fir (*Cunninghamia lanceolata*). *Sci Rep.* 2020; 10, 12260. DOI: 10.1038/s41598-020-69213-6
87. Rajpurohit SS, Jaiswal P. Studies on the Occurrence and Distribution of Mycorrhiza in Different Sites of Kota, Rajasthan, India, *Applied Ecology and Environmental Science.* 2020; 8(6):408-413 DOI:10.12691/aees-8-6-12

© 2022 Rajpurohit and Jaiswal; This is an Open Access article distributed under the terms of the Creative Commons Attribution License (<http://creativecommons.org/licenses/by/4.0>), which permits unrestricted use, distribution, and reproduction in any medium, provided the original work is properly cited.

Peer-review history:
The peer review history for this paper can be accessed here:
<https://www.sdiarticle5.com/review-history/89116>